

# Communities for walkability

## About citizen science



### What is citizen science?

As we face global challenges, we want to find local ways to make a difference.

Every year, volunteers from all over the world contribute millions of hours to science. In Australia alone, hundreds of citizen science projects exist with over 100,000 citizen scientists contributing to scientific data collection, classification, and analysis.

Citizen science occurs when ordinary people like you help to conduct scientific research. It is a collaboration between researchers and those of you who are curious, concerned, and motivated to make a difference. It involves public participation in scientific research with the aim to increase scientific knowledge.

By participating in citizen science projects, you can contribute to the collection and analysis of data at volumes that researchers alone simply do not have the capacity to achieve.



### What it means to be a good citizen scientist?

A good citizen science project:

- » Actively involves citizen scientists as collaborators or contributors
- » Has genuine scientific outcomes (e.g. answers a research question or facilitates a policy change)
- » Provides benefits to both the researchers and the citizen scientists from taking part
- » Involves citizen scientists in multiple stages of the research process
- » Makes results from citizen science project publicly available
- » Follows the same protocols for citizen scientists and researchers to ensure high quality data
- » Takes into consideration legal and ethical issues surrounding copyright, intellectual property, data sharing agreements, confidentiality, and attribution.

(adopted from the Australian Citizen Science Association, 2018)

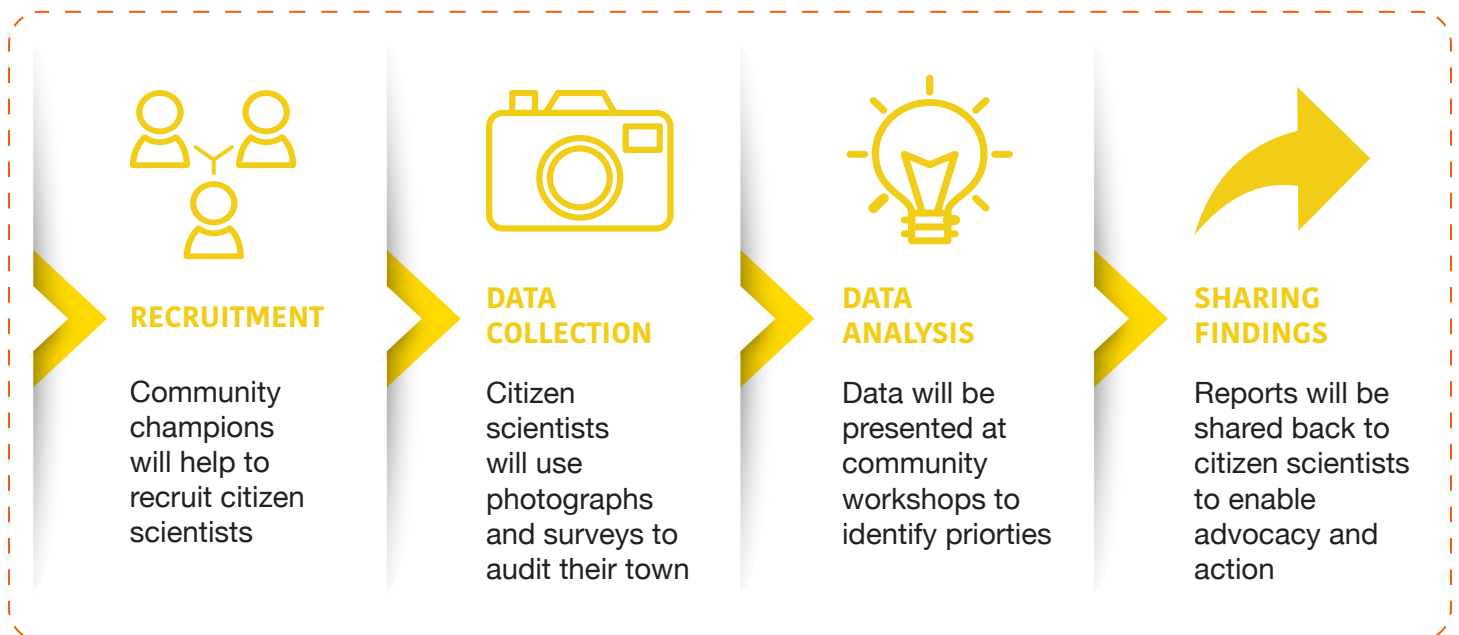
## Citizen scientists in the Communities for Walkability project



Our citizen scientists are you – community champions and community participants!

Although you will have a large role in data collection, you will also be invited to other stages of the research process, including making sense of findings.

## How citizen scientists will be involved in this project



## References

<https://preventioncentre.org.au/blog/how-can-citizens-contribute-to-the-science-and-practice-of-public-health/>  
<https://scistarter.org/citizen-science>  
<http://www.scienceinthecityclassroom.com/2017/12/citizen-science-real-scientists-in.html>

## Contact

If you have more questions, please contact:

Assoc. Prof. Verity Cleland: [verity.cleland@utas.edu.au](mailto:verity.cleland@utas.edu.au), 03 6226 4603

Dr. Subhash Koirala: [subhash.koirala@utas.edu.au](mailto:subhash.koirala@utas.edu.au), 03 6324 3667

Or visit the website - <https://www.menzies.utas.edu.au/research/participant-based-studies/rural-walkability-projects>